

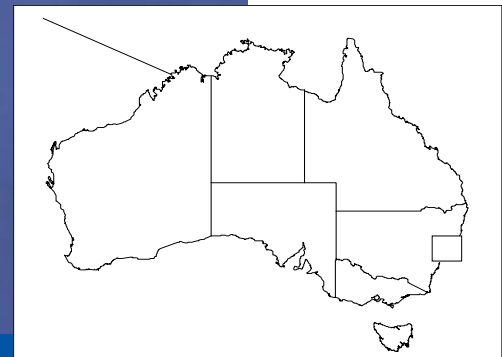
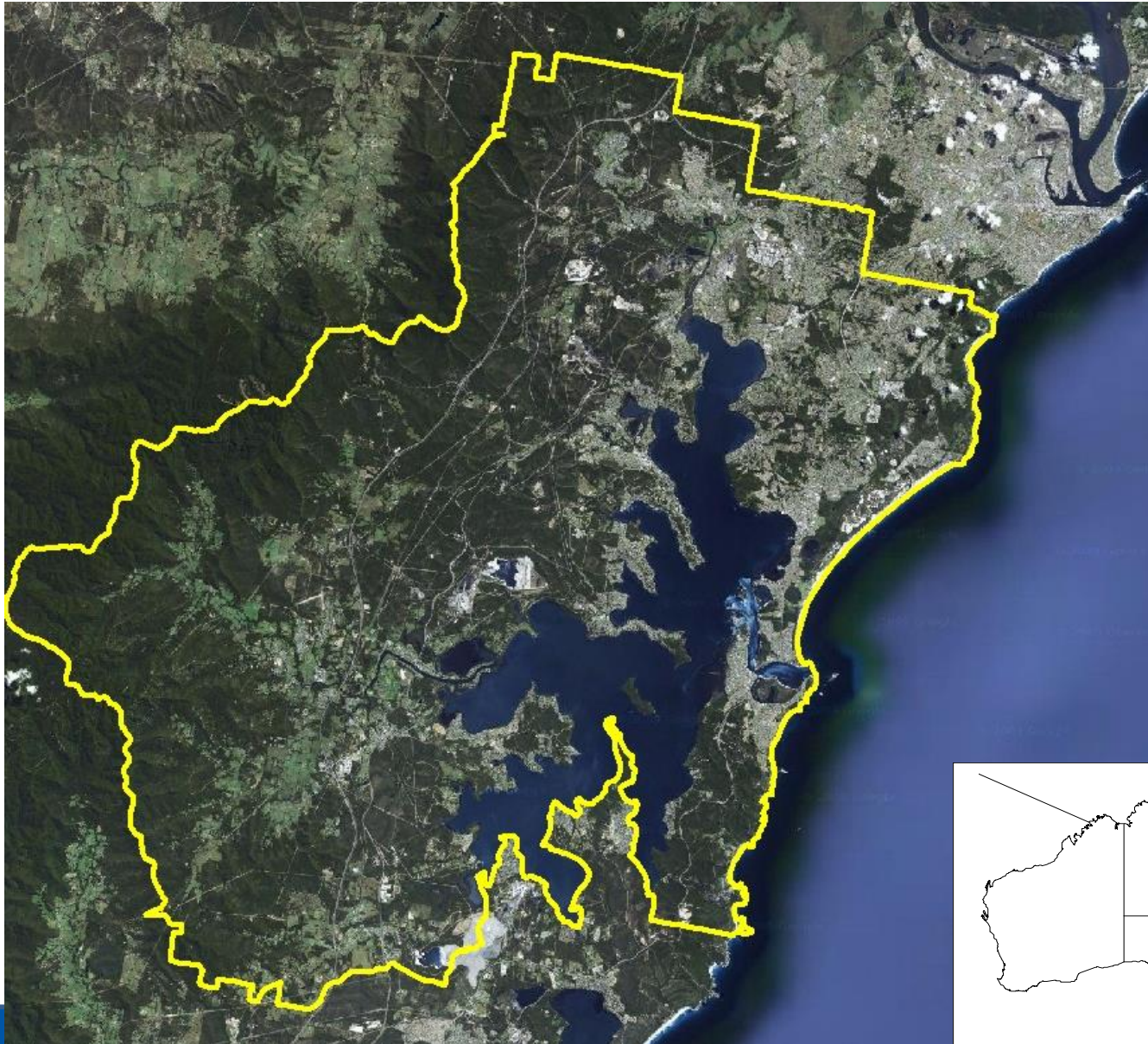


Making an Equitable Contribution to Global Emissions Reduction at the Local Government Level

CLAIR Forum 24 February 2016

Dr Alice Howe
Manager Sustainability
Lake Macquarie City Council

Lake Macquarie City



Our Policy Position - Greenhouse Gas Emissions



Citywide

- 3% per capita reduction each year

Organisation

- 3% reduction each year

from a 2007-08 baseline

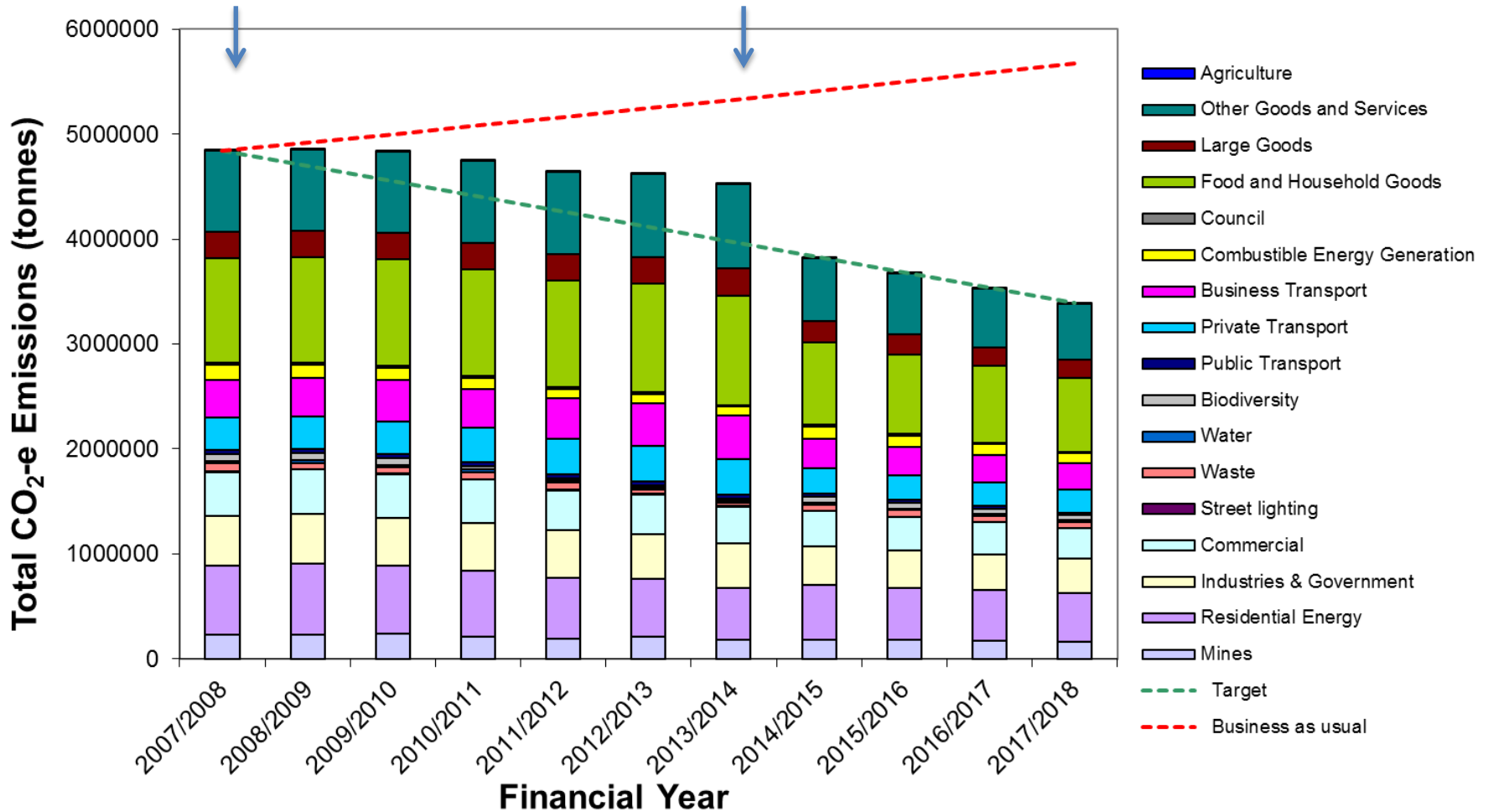
**Aim to make an equitable contribution to
global greenhouse gas emissions reduction**

Our Progress – Citywide Emissions



4,844,122 t CO₂-e
population 192,161

4,529,687 t CO₂-e
population 200,761



Our Citywide Projects – Community Engagement



Save Money at Home and at Work

Bust Your Bills Competition

Enter now for a chance to win \$500 towards your electricity bill



Our Citywide Projects – Community Engagement



Sort it Right



Lake Mac Waste Services Guide 2015/2016

Put out two bins each week by 5.30am

Garbage and recycling week: 1m bin (red lid), 1m bin (yellow lid)

Garbage and green waste week: 1m bin (red lid), 2m bin (green lid)

Month	Days	Bin 1 (m)	Bin 2 (m)
JULY	S M T W T F S	1 2 3 4	
AUGUST	S M T W T F S	2 3 4 5 6 7 8	1
SEPTEMBER	S M T W T F S	1 2 3 4 5	1 2 3 4
OCTOBER	S M T W T F S	1 2 3 4 5 6 7 8 9 10	1 2 3 4
NOVEMBER	S M T W T F S	1 2 3 4 5 6 7 8 9 10 11 12 13 14 15 16 17 18 19 20 21 22 23 24 25 26 27 28 29 30 31	
DECEMBER	S M T W T F S	1 2 3 4 5 6 7 8 9 10 11 12 13 14 15 16 17 18 19 20 21 22 23 24 25 26 27 28 29 30 31	
JANUARY 2016	S M T W T F S	1 2 3 4 5 6 7 8 9 10 11 12 13 14 15 16 17 18 19 20 21 22 23 24 25 26 27 28 29 30 31	
FEBRUARY	S M T W T F S	1 2 3 4 5 6 7 8 9 10 11 12 13 14 15 16 17 18 19 20 21 22 23 24 25 26 27 28 29	
MARCH	S M T W T F S	1 2 3 4 5 6 7 8 9 10 11 12 13 14 15 16 17 18 19 20 21 22 23 24 25 26 27 28 29 30 31	
APRIL	S M T W T F S	1 2 3 4 5 6 7 8 9 10 11 12 13 14 15 16 17 18 19 20 21 22 23 24 25 26 27 28 29 30	
MAY	S M T W T F S	1 2 3 4 5 6 7 8 9 10 11 12 13 14 15 16 17 18 19 20 21 22 23 24 25 26 27 28 29 30 31	
JUNE	S M T W T F S	1 2 3 4 5 6 7 8 9 10 11 12 13 14 15 16 17 18 19 20 21 22 23 24 25 26 27 28 29 30	

Find your bin collection day, recycling/green waste weeks, next bulk waste data plus more on my.lakemac.com.au

Waste matters

Drop off your household problem waste for recycling

Community Recycling Centres

Your local Community Recycling Centre is NOW OPEN

You can drop off:

- Paint
- Gas bottles and fire extinguishers
- Fluoro globes and tubes
- Household and car batteries
- Smoke detectors
- Motor and other oils

FREE SERVICE

Your local Community Recycling Centre is located at:
Awaba Waste Management Facility, 367 Wilton Road, Awaba
 Hours: 8am–4pm every day (except Christmas Day) Only household quantities accepted.

For more information call the Environment Line on 131 555, contact Council on 4921 0333 or visit www.epa.nsw.gov.au/recyclingcentres

This is a NSW EPA Waste Less, Recycle More initiative funded from the Waste Levy. Visit www.epa.nsw.gov.au

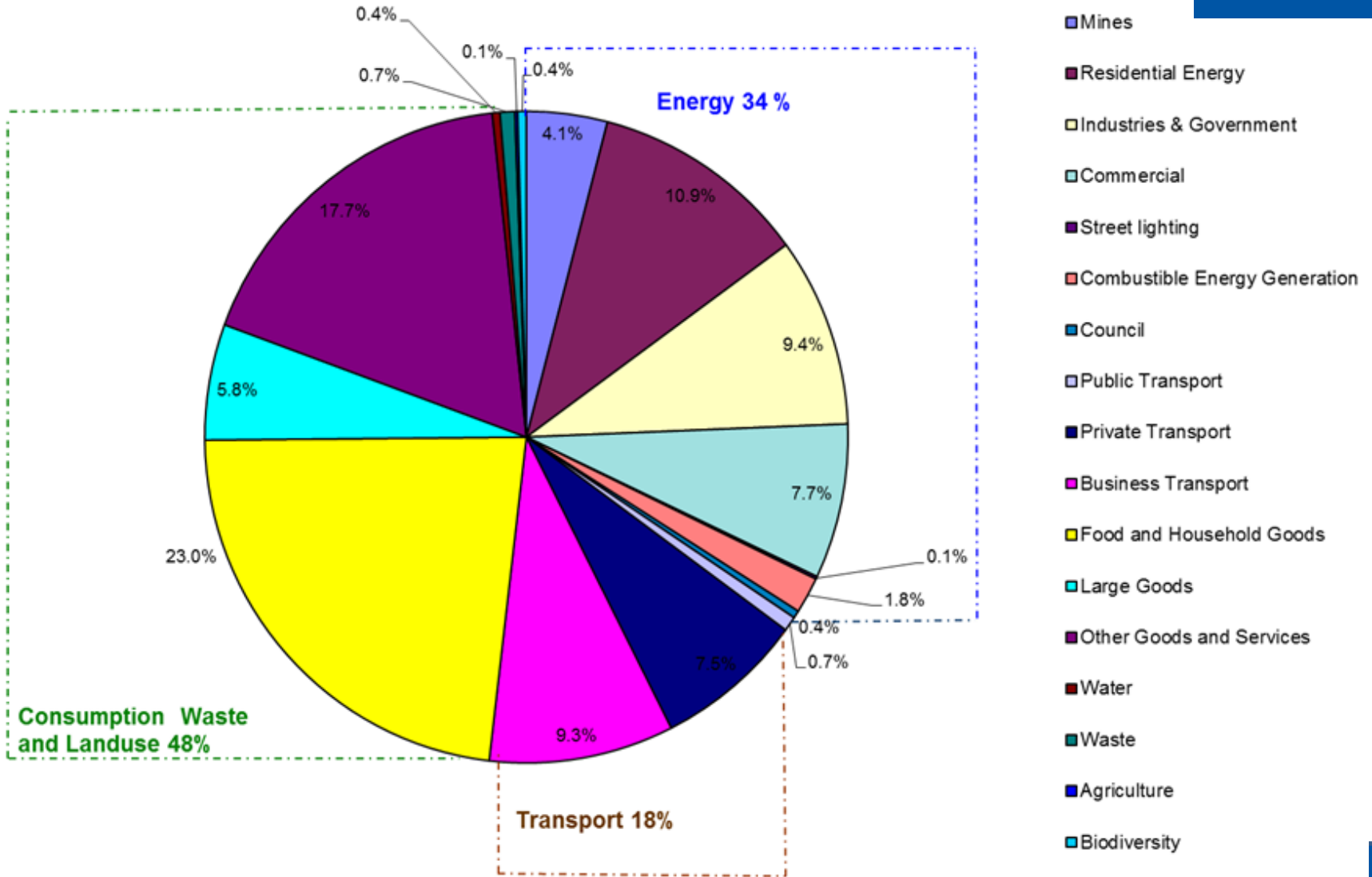
Our Citywide Projects – Community Engagement



Sustainable Neighbourhoods and Schools



Our City – Future Opportunities

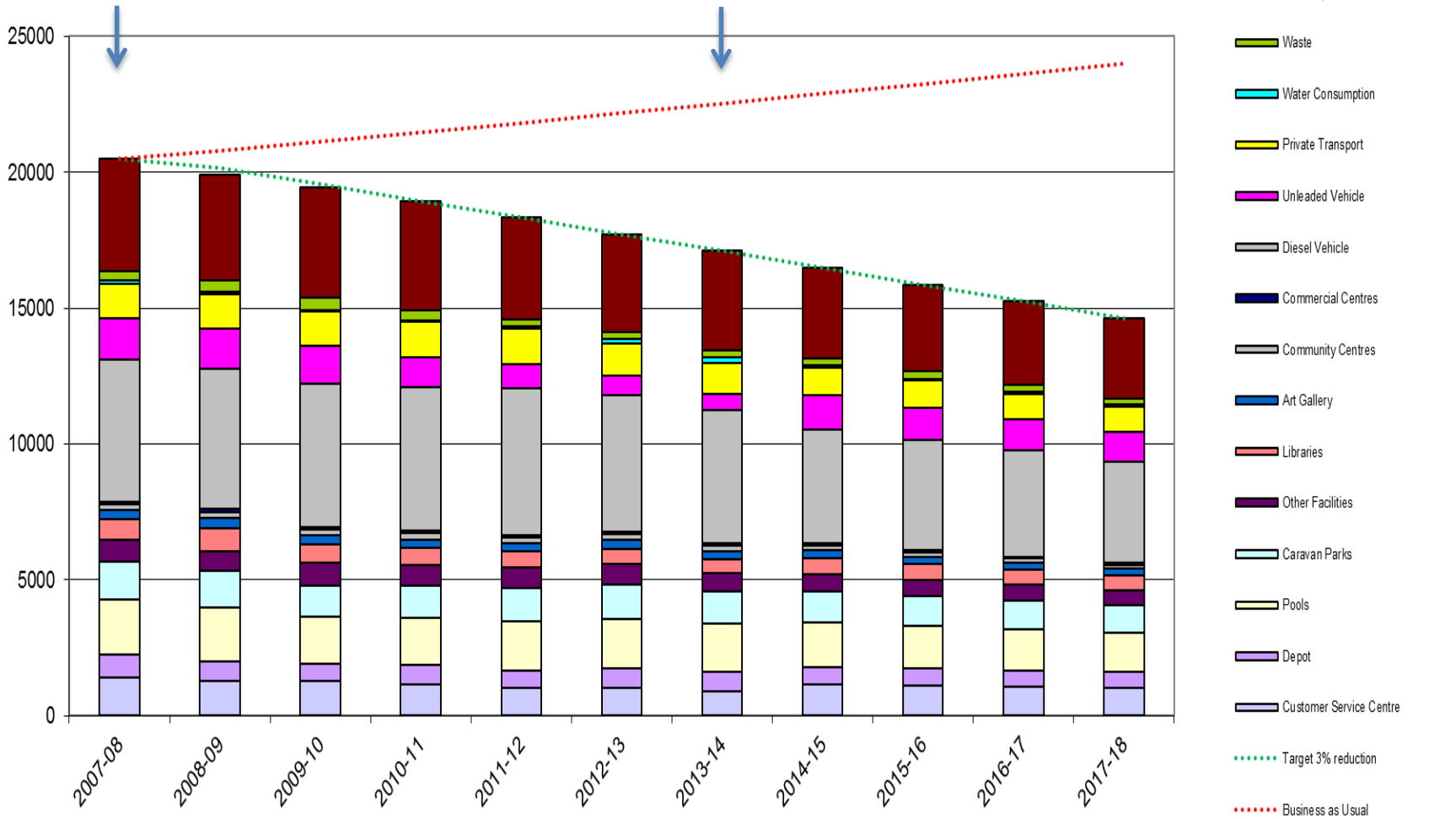


Our Progress – Council Emissions



20,472 t CO₂-e

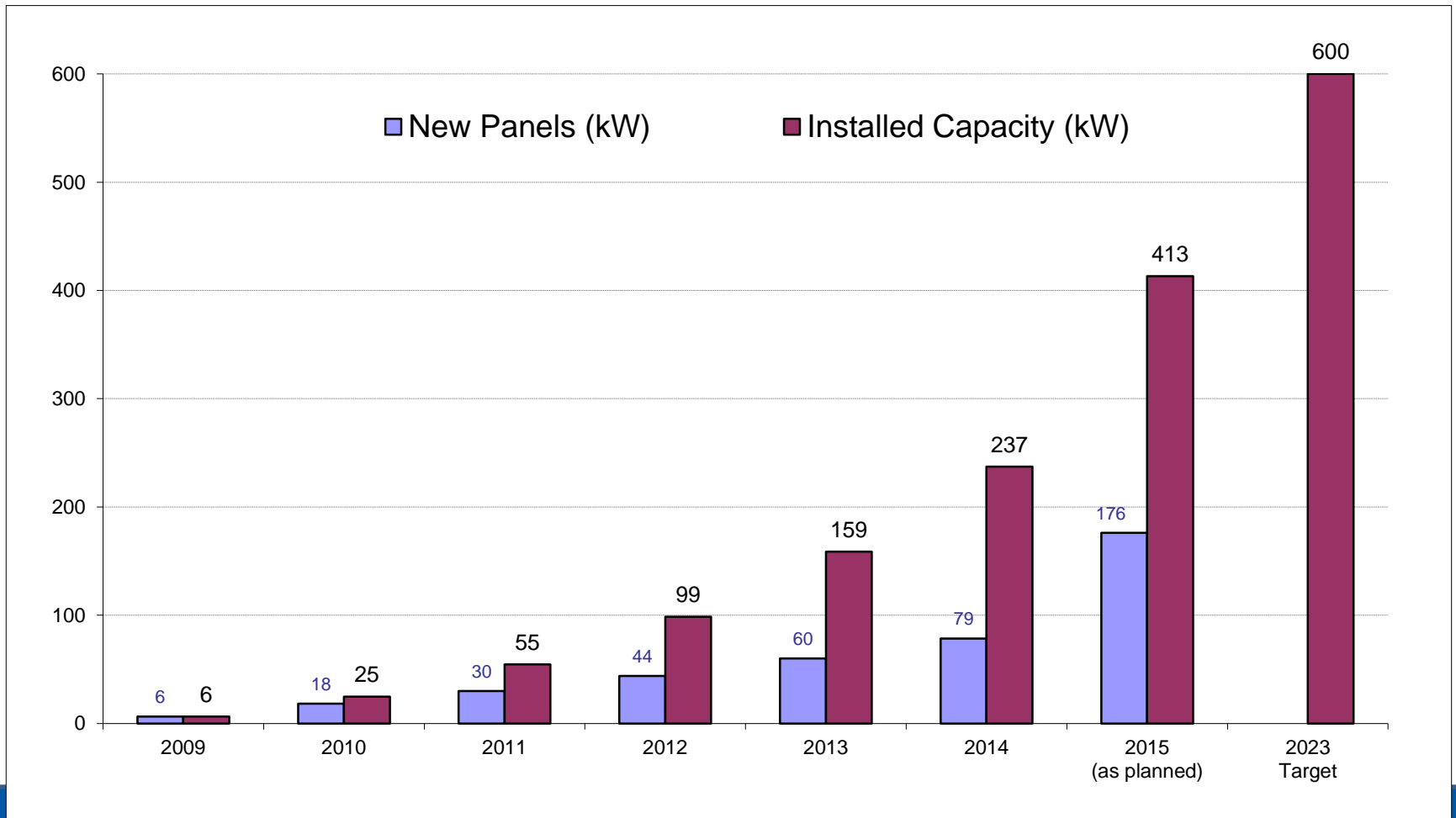
17,094 t CO₂-e



Our Council Projects – Solar Photovoltaics



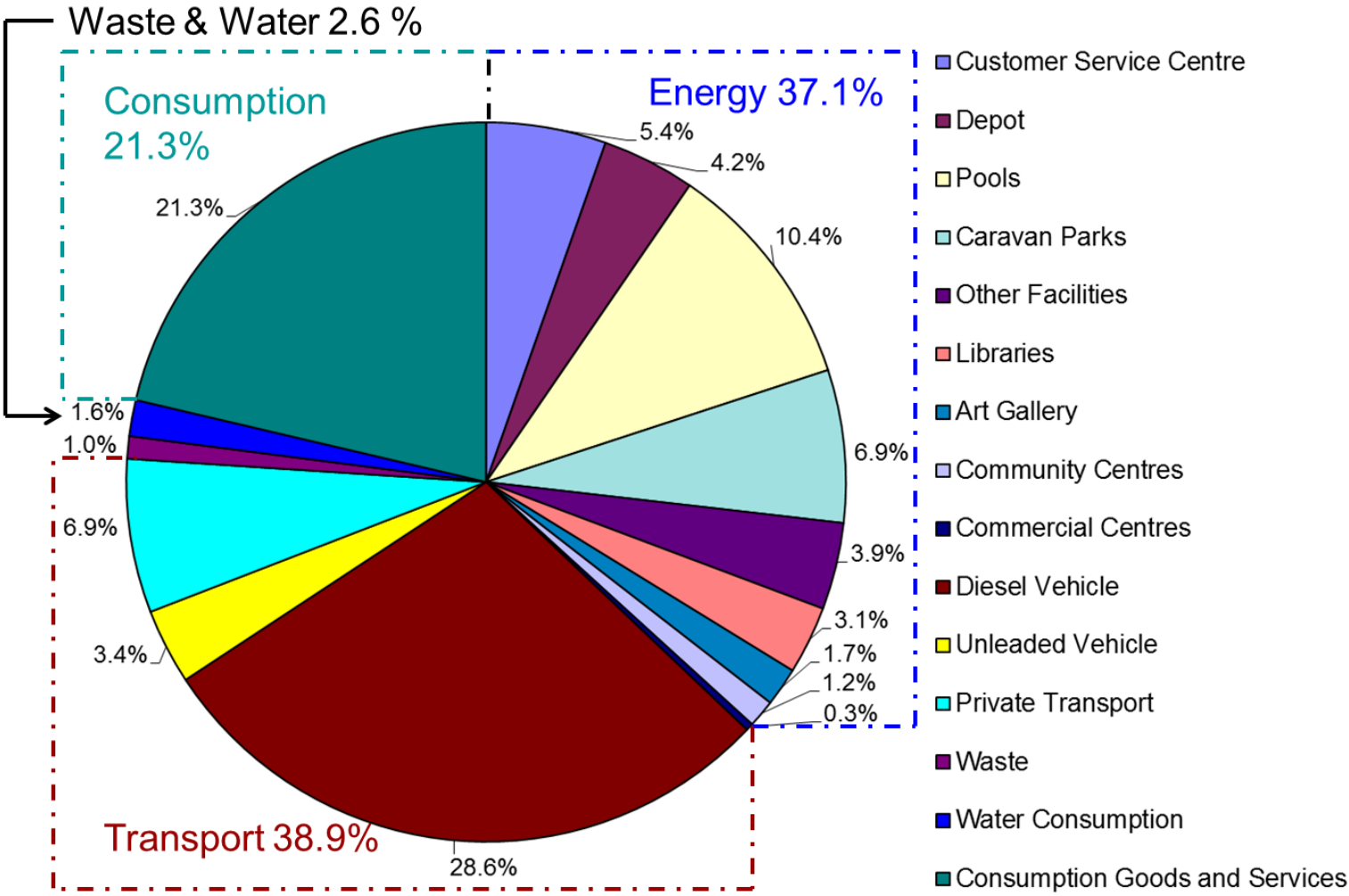
Our Council Projects - Solar Photovoltaics



Our Council Projects – Energy Efficiency



Our Council – Future Opportunities



Thank you

